




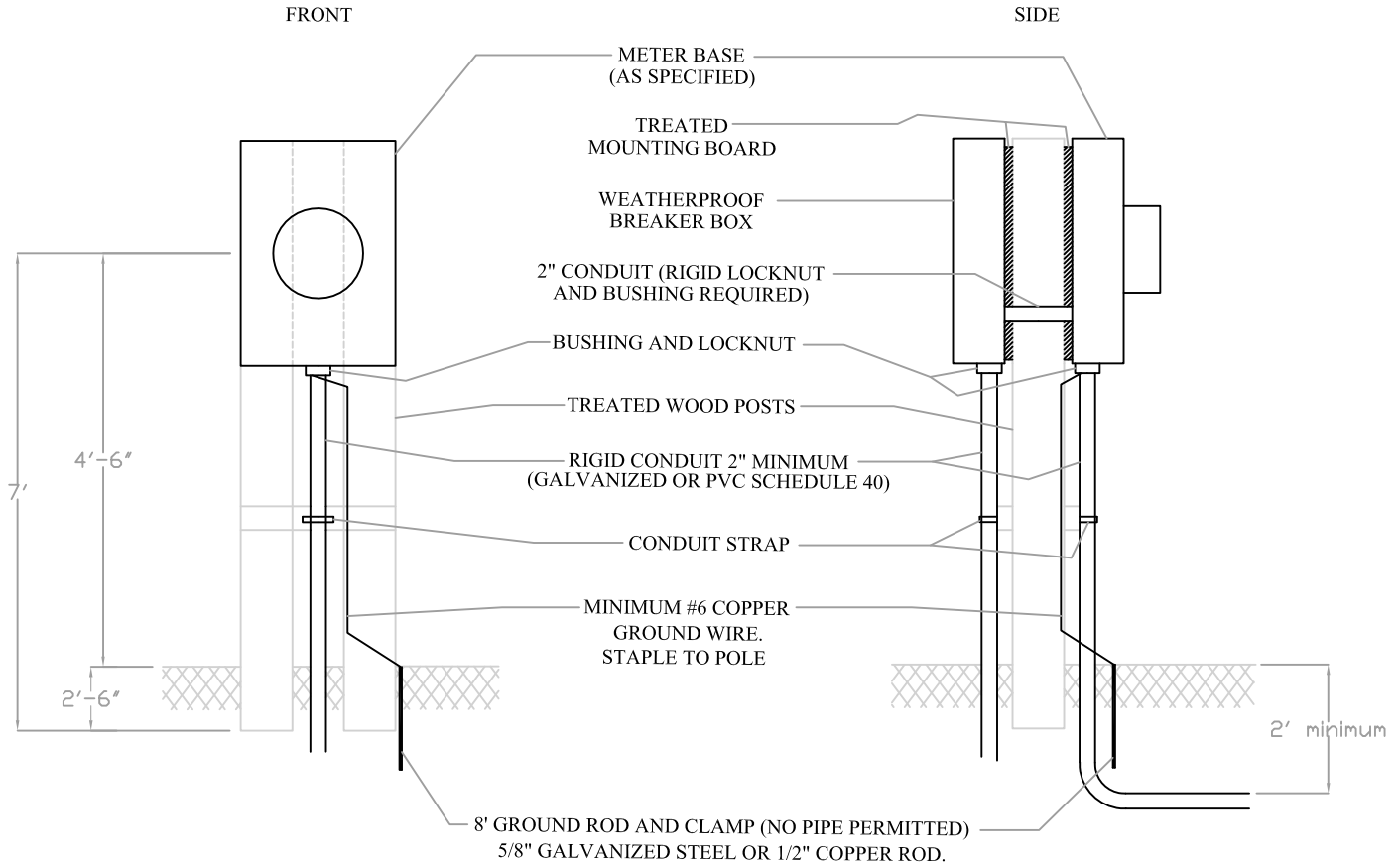
# Berkeley Electric Cooperative, Inc.

Your Touchstone Energy® Cooperative 

## Specification: Meterbase installation for underground pedestal service (mobile home)

Moncks Corner 843-761-8200 \* Johns Island 843-559-2458 \* Goose Creek 843-553-5020 \* Awendaw 843-884-7525

**TO THE MEMBER:** Service will not be extended to houses, mobile homes, and other permanent type facilities parked or built under or over Berkeley Electric Cooperative, Inc. ("the Cooperative") power lines. Service conductor shall have a clearance of no less than three feet (3') from windows that are designed to be opened, doors, porches, fire escapes or similar locations.



### NOTES:

- Above 100 Amps, meter bases with aluminum conductors require compression connectors. For copper conductors, screw down lugs are acceptable.
- All meter locations will be determined by the Service Planning Department (in District Office).
- All wiring to be in strict accordance with requirements of the latest version of the National Electric Code and National Electric Safety Code, the Cooperative, and any local inspection authorities having jurisdiction.
- Service entrance conduits shall be supported by straps within 12" of meter base. Distance between straps shall not exceed 30".
- Ground Conductor is required from the outside disconnect to the inside distribution panel. (NEC article 408.40)

**WOOD POST MATERIALS**  
 TWO 4"x4"x8' TREATED POSTS  
 OR  
 ONE 4"x6"x8'  
 OR  
 ONE 6"x6"x8'

**RECOMMENDED WIRE SIZE**  
 Conductor Types and Sizes

Amps	Copper	Aluminum
200	#2/0	#4/0

Based on NEC Table 310.15(B)(16)