



Surge Guard® Protection

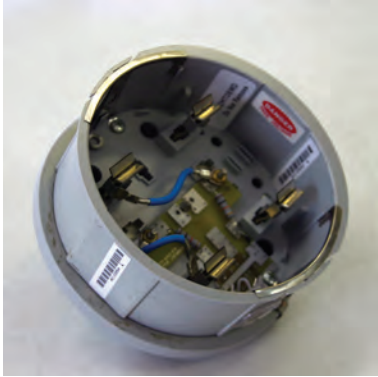
FOR YOUR ELECTRONIC EQUIPMENT AND APPLIANCES

MODEL

SPECIFICATIONS

Meter-Treater 240-1S

*First Stage protector
installation at meter
base*



- Applied voltage 120/240 volts (120/208 for 5J option)
- MCOV 150 volts phase to ground
- Protection each phase to neutral/ground in meter can
- Maximum surge withstand greater than 57,000 amps
- Clamping voltage 240 volts
- 200 amp service
- Safety fused
- Each unit factory tested
- Conforms to UL 414 & UL 1449
- 15 year warranty/connected warranty
- Made in the USA
- Light grey

Meter-Treater RCHW 040/120

*First Stage protector
installation at meter
base
(bolt in type meters)
"styles my vary"*



- Service voltage 120/240 volts
- Single phase
- Protection modes: Line to neutral, Line to line
- Single shot pulse greater than 68 kA
- Single shot pulse per leg 41 kA
- Energy dissipation 2700 joules total
- Made in the USA
- UL Approved
- Suppression voltages:

	L/N	L/L
550A	.58V	1.12kV
3 kA	.80kV	1.38 kV
10 kA	2.80 kV	3.20 kV

Pro-Treater AC JR. EDPT1

*Second Stage protector
TV, DVD, Microwave -
where a single outlet is
needed*



- Output rating - 125V, 15A, 1875W 50/60HZ
- Response time - < 5 nanoseconds
- Clamp level at 1mA DC - 215V L-N, L-G, N-G
- Clamping level 8x20uS 500A - <340V L-N, L-G, N-G
- UL 1449 rating (500A) - 400V L-N, L-G, N-G
- No RFI-EMI filter • No sine wave tracking
- Joule rating total - 360 • 1 yr product/connected warranty
- Reliability - passed UL 1449 Duty Cycle Test
- Life expectancy of surge components - 1 time 9000A, 10 times 4500A, 100 times 2000A, 1000 times 1000A
- Indicators - Power "On" - Neon/LED, Surge - LED
- Protection devices - thermal fuse/fuse on surge components

Pro-Treater AC3 EDPT3

*Second Stage protector
TV, DVD, Microwave -
where three outlets are
needed*



- Output rating - 125V, 15A, 1875W 50/60HZ
- Response time - < 5 nanoseconds
- Clamp level at 1mA DC - 215V L-N, L-G, N-G
- Clamping level 8x20uS 500A - <340V L-N, L-G, N-G
- UL 1449 rating (500A) - 400V L-N, L-G, N-G
- No RFI-EMI filter • No sine wave tracking
- Joule rating total - 360 • 1 yr product/connected warranty
- Reliability - passed UL 1449 Duty Cycle Test
- Life expectancy of surge components - 1 time 9000A, 10 times 4500A, 100 times 2000A, 1000 times 1000A
- Indicators - Power "On" - Neon/LED, Surge - LED
- Protection devices - thermal fuse/fuse on surge components



**Pro-Treater
Coax Jr.
EDPT1C**

*Second Stage protector
Cable TV and/or
Satellite Dish - coax
plug in device*

- Output rating - 125V, 15A, 1875W 50/60HZ
- Response time - < 5 nanoseconds
- Clamp level at 1mA DC - 215V L-N, L-G, N-G
- Clamping level 8x20uS 500A - <340V L-N, L-G, N-G
- UL 1449 rating (500A) - 400V L-N, L-G, N-G
- No RFI-EMI filter • No sine wave tracking
- Joule rating total - 360 • 1 yr product/connected warranty
- Reliability - passed UL 1449 Duty Cycle Test
- Life expectancy of surge components - 1 time 9000A, 10 times 4500A, 100 times 2000A, 1000 times 1000A
- Indicators - Power "On" - Neon/LED, Surge - LED
- Protection devices - thermal fuse/fuse on surge components



**Pro-Treater
Faxcessory
EDPT1T**

*Second Stage protector
Fax Machine, Modem
on computer lines -
where a single outlet is
needed - plug in device*

- Output rating - 125V, 15A, 1875W 50/60HZ
- Response time - < 5 nanoseconds
- Clamp level at 1mA DC - 215V L-N, L-G, N-G
- Clamping level 8x20uS 500A - <340V L-N, L-G, N-G
- UL 1449 rating (500A) - 400V L-N, L-G, N-G
- No RFI-EMI filter • No sine wave tracking
- Joule rating total - 360 • 1 yr product/connected warranty
- Reliability - passed UL 1449 Duty Cycle Test
- Life expectancy of surge components - 1 time 9000A, 10 times 4500A, 100 times 2000A, 1000 times 1000A
- Indicators - Power "On" - Neon/LED, Surge - LED
- Protection devices - thermal fuse/fuse on surge components



**Multi-Treater
MT7 Plus
EDMT7P**

*Second Stage protector
multi-purpose for telephone,
network and coaxial line
protection where up to 7
outlets are needed - 3 slide
in data protection bays - 6'
power cord*

- Let through voltage - <10V (active Sine Wave tracking filter)
(6KV ringwave, ANSI.C62.41 - 1991 Cat A3)
- Peak surge current - >50,000 Amps
- UL 1449 rating - 330V between all lines (L-N-, L-G, N-G)
- EMI/RFI noise reduction (50 omega sys) 45-70dB
- Active elements (6) 20 mm MOV @ 130VRMS
- Response time - instantaneous
- Joule rating total - 620 • Line voltage 125V
- Load current - 15 Amps • Max. power - 1875VA
- Bad wiring/No ground LED • Protection status LED
- Warranty - lifetime/connected



**Tripp-Lite
TLP810NET**

*Second Stage protector
multi-purpose for Internet
and computer connections*

- Eight (8) AC outlets / 10 ft. cord
- 3690 Joule Rating
- 1 pair tel/modem, 1 pair coaxial, 1 pair ethernet
- LED diagnostics for protection and grounding status
- 50,000 warranty with ultimate lifetime insurance



**Tripp-Lite
TLP810SAT**

*Second Stage protector
multi-purpose for Satellite
TV*

- 8 AC outlets / 10 foot cord
- 3690 Joule Rating
- 1 pair tel/modem, 2 pair coaxial
- LED diagnostics for protection and grounding status
- 50,000 warranty with ultimate lifetime insurance



**Tripp-Lite
HTSWIVEL6**

*Second Stage protector
multi-purpose for Home &
Business Theater*

- High performance surge and line protection for all home & business theater equipment
- 6 rotational AC outlets
- 1 pair tel/modem connections, 1 pair coaxial
- 1200 Joules Rating with EMI/RFI noise filter
- LED diagnostics for protection and grounding status
- 50,000 warranty with ultimate lifetime insurance